

eve room 

Reviewers Guide



eve.

Eve Room – Indoor Air Quality Monitor

Now your indoor air quality, temperature, and humidity are just a glance away. Compact and crafted to perfection. Equipped with all-new precision sensor technology. And furnished with a customizable display encompassed by a sleek aluminum frame. Eve Room puts vital insight at your fingertips. So you can make healthier choices until it becomes second nature.

HomeKit-enabled and powered by a USB-rechargeable battery, Eve Room connects directly to your iPhone or iPad via Bluetooth low energy technology.

The Eve app distills all data into graphs by hours, days, months, and even years.



Eve Room - Highlights

1. Tap into your home

Equipped with all-new precision sensor technology, a customizable display and sleek aluminum frame, Eve Room puts vital insight at your fingertips. Choose your favorite measurement layout to highlight air quality (VOC), temperature (°C/°F) or humidity. And keep track of conditions using the Eve app.

4. Break free from wires

Thanks to Apple HomeKit technology, Eve Room connects directly to your iPhone or iPad via Bluetooth. With six weeks of power from a single charge via any standard USB port, you're never left scrambling for batteries or proprietary adapters.

2. Elegantly crafted

With the latest-generation gas sensor from Swiss specialist Sensirion, a high-contrast e-ink display, and built-in USB-rechargeable battery, Eve Room boasts a cutting-edge design and even more advanced technology than its predecessor.

5. Easy installation

Installation and setup of Eve Room is dead easy. All you need is your iPhone and the accessory's HomeKit setup code, which can be found on the hardware itself, as well as in the included Quick Start Guide. To pair Eve Room, simply open the Home app or Eve app and scan the code using your iPhone camera.

3. Gain insights

The Eve app visualizes data via graphs by hours, days, months, and even years. By correlating trends with happenings in your home, you're always ahead of the curve, empowered to keep your air fresh, and prepped to maintain healthy humidity levels.

6. Automation made easy

Apple HomeKit technology makes it easy to seamlessly combine Eve Room with other HomeKit-enabled accessories in your home: If Eve Room measures moderate or poor air quality, a smart plug turns on an air purifier. If the air becomes too dry, a HomeKit rule activates the humidifier.

Eve Room Hardware

Frame made from
anodized aluminum

Polished,
chamfered edges

Capacitive touch
controls

E-ink display
(1.54 inch)



Precision sensor
technology by
Sensirion

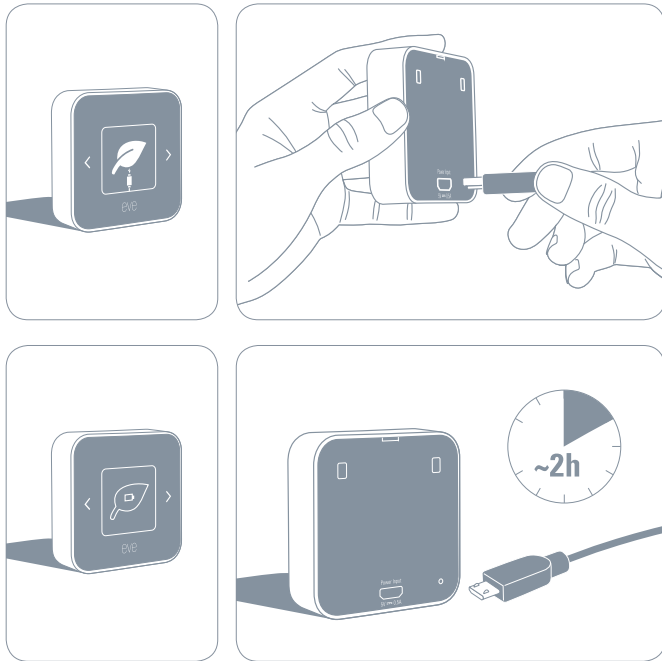
On-device
memory buffers up
to 3 weeks' worth of
measurement data

Built-in
rechargeable
battery (6+ weeks)

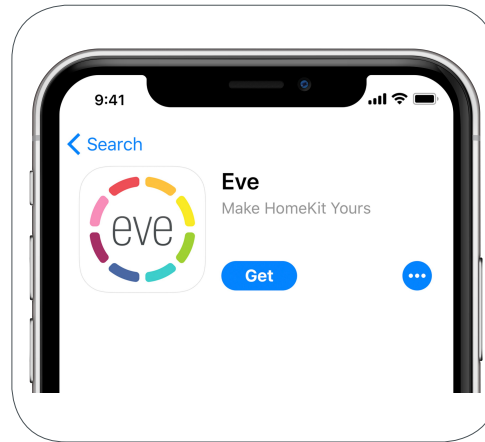
Charging port
(Micro USB)



Connecting Eve Room



1. To activate Eve Room, connect it to a standard USB power supply (5 V, at least 500 mA – such as your iPhone power adapter) via the included USB cable. When battery levels are low, and during charging, Eve Room will stop measuring air quality. It takes approximately 2 hours to fully charge Eve Room.

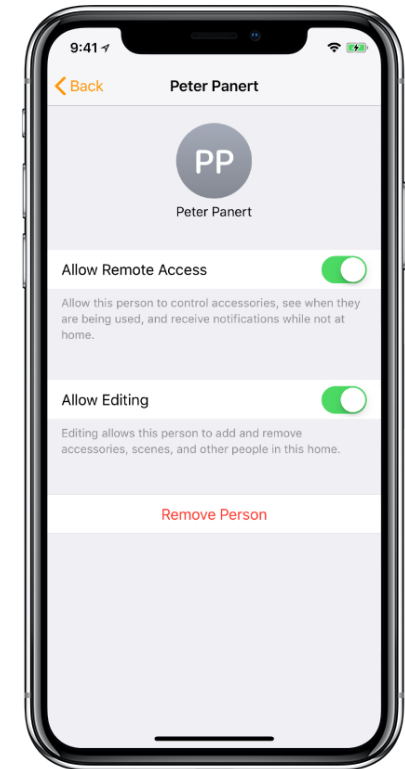
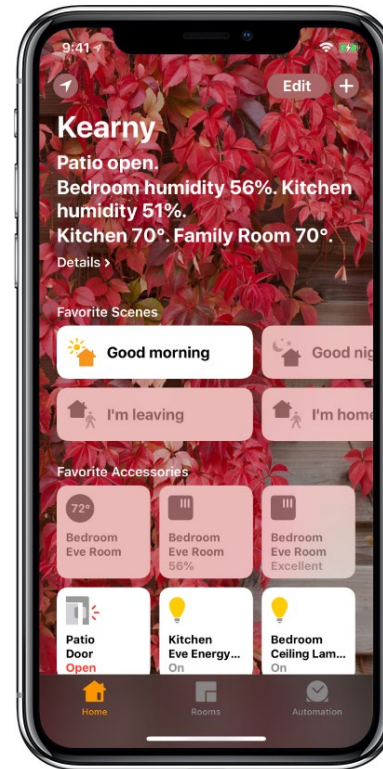
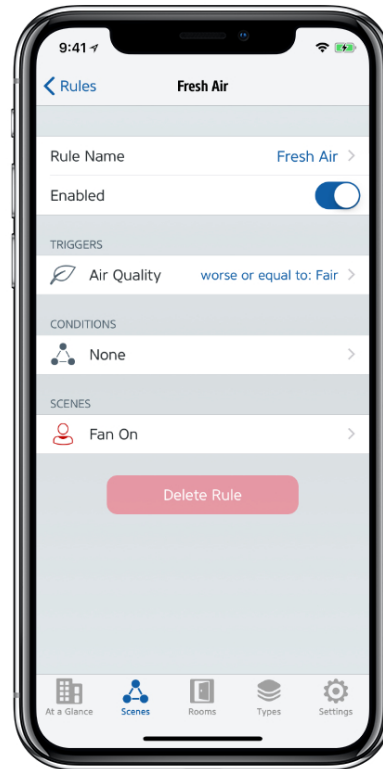
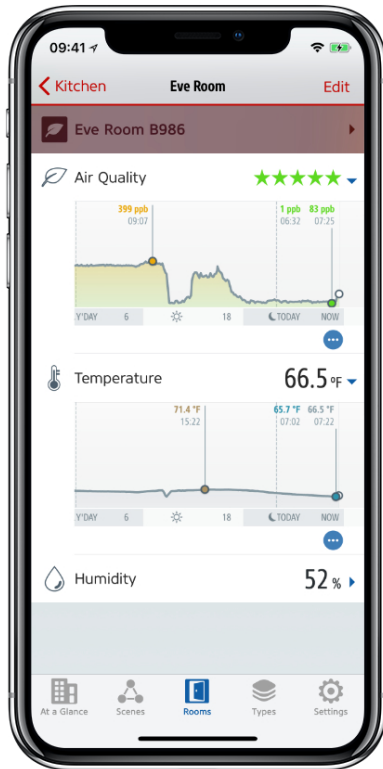


2. Download the Eve app from the App Store. Open the Eve app and tap Add Accessory. Eve will now guide you through the setup process.



3. Touch the capacitive controls to cycle through displays. Air quality is influenced by numerous environmental factors that are unique to every home. Eve Room will automatically adjust to your home throughout its first day of operation, during which time air quality measurements may appear irregular.

Using Eve Room with Eve and Apple Home

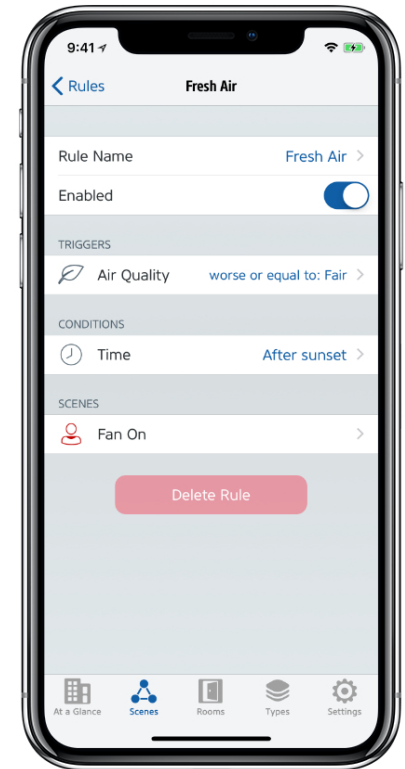
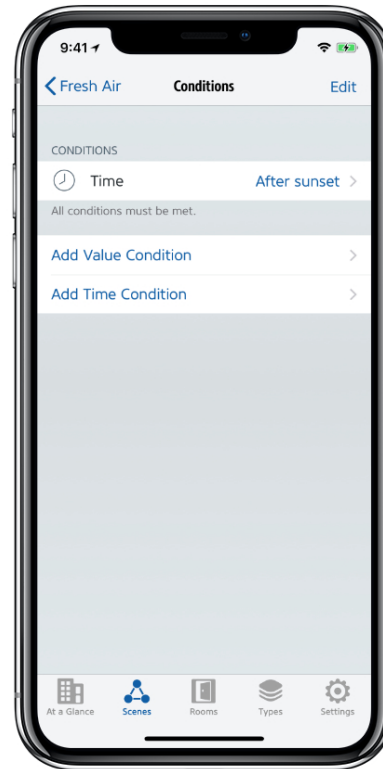
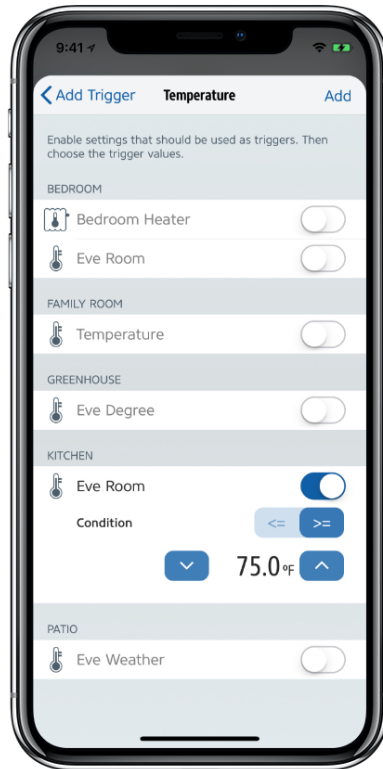
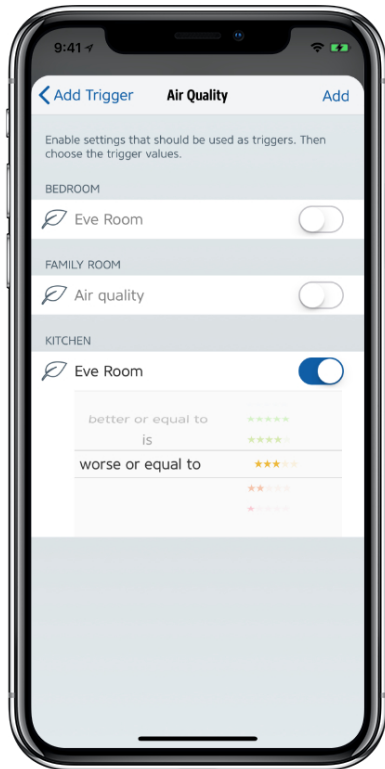


Eve...

- ... provides full control of Eve accessories and facilitates firmware updates
- ... stores historical data that you can view as graphs and export as .xls
- ... enables you to create sophisticated HomeKit automations based on Eve Room's accurate measurements

Apple Home...

- ... offers quick access to your home's data via Control Center and your Apple Watch
- ... displays your home hub's status
- ... lets you edit guest permissions



You can build HomeKit automations based on Eve Room's measurements by crafting rules that use value changes in triggers or conditions. For example, a rule could automatically turn on your air purifier once the air quality in the room falls below Good (four stars). Another rule could trigger a fan to power up when the temperature

exceeds 25 degrees. Tip: Set up a second rule to turn off the fan or purifier once the temperature drops or the air quality improves.

More information on automation:

<https://blog.evehome.com/automation-for-air-quality/>

FAQ

How do I calibrate Eve Room?

Eve Room will determine a room's air quality by contrasting a certain tVOC count against optimal conditions. Calibrating the sensor requires that you place Eve Room in different locations; one with ambient conditions and another that is exposed to fresh air. After the initial setup, place Eve Room in its future location for about 6 hours, then move it to a well-ventilated area for 30 minutes. Repeat this calibration process if you move the sensor to a different room.

How do I perform a reset?

If Eve Room continues to show implausible values, you may want to perform a soft reset. Just press the reset button on the back. If the device doesn't resume normal functionality, please restore factory settings: Press and hold both arrow keys for a few seconds to bring up the reset icon. Within the next 30 seconds, press the reset button to reset the hardware.

How is the new sensor different?

Both the original and new-generation Eve Room measure airborne volatile organic compounds. However, while the previous model would convert values into a so-called CO₂ equivalent, thereby attaching importance to compounds produced by humans, Sensirion's technology uses multiple sensor components to compile a total VOC count (tVOC). This unit is considered a meaningful indicator by health authorities around the world.

How long does the battery last?

Eve Room is runs on a built-in, USB-rechargeable battery that lasts 6 weeks or more on one charge. It takes approximately 2 hours to fully charge Eve Room. Note that when battery levels are low, and during charging, Eve Room will stop measuring air quality. The device can also be operated when permanently connected to a power supply.

How accurate are the measurements?

Eve Room uses state-of-the-art technology to provide near-exact measurements. Accuracy is $\pm 0.3\text{ }^{\circ}\text{C}$ / $\pm 0.54\text{ }^{\circ}\text{F}$, $\pm 3\%$ humidity. The gas sensor combines multiple sensing elements with long-term durability that is unprecedented for a commercially available product.

How do I export data?

You'll need the Eve app to process measurements recorded by Eve Room in a spreadsheet on your iOS device or computer. Double-tap a graph, select Measurements in the new screen, and tap the share icon to access the export function. Export creates an .xls file, so you can even use it in Numbers.

eve.

For further questions please contact Jen Squilla,
+1 305 374 4404 Ext.191, jensquilla@maxborgesagency.com